

345B L Series II Hydraulic Excavator



Operator Station

Roomy, quiet, automatic climate controlled cab has excellent sightlines to the work area to help keep operator fatigue low and production up throughout the entire shift.

Serviceability

Fast, easy service with advanced filtration, filter access and electronic diagnostics for increased productivity.

Electronic Control System

The Electronic Control System and Advanced Diesel Engine Management (ADEM II) maximizes fuel efficiency and performance by maintaining the optimum balance between engine speed and hydraulic demand.

Hydraulics

High pressure Caterpillar® hydraulics increase break-out and crowd forces to maximize bucket loads and lift capability while decreasing cycle times.

Engine

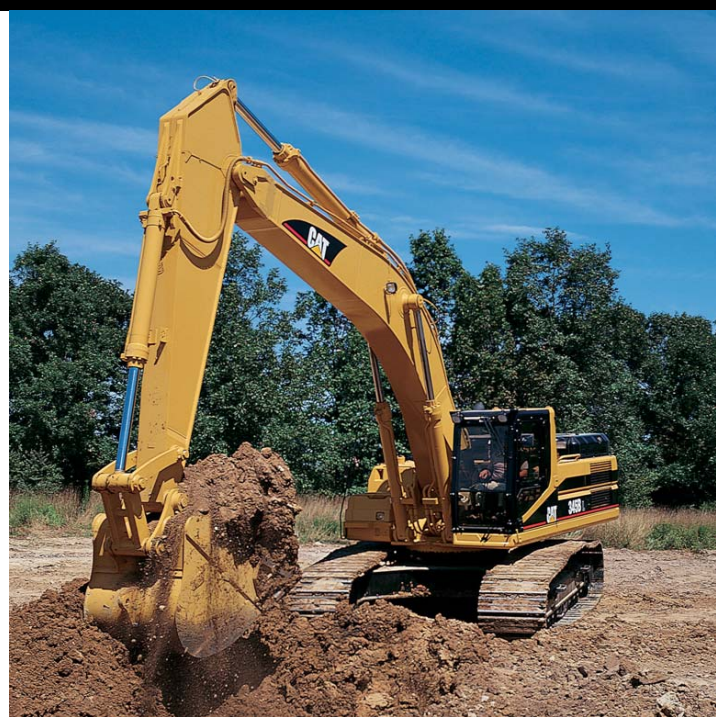
The 345B L Series II is powered by the Cat® 3176C ATAAC engine which complies with worldwide emissions requirements and future EPA Tier 2 requirements. This engine includes several design features which enhance performance, efficiency and reliability.

Structures

Caterpillar design and manufacturing techniques assure outstanding durability and service life from these important components.

Undercarriage

Cat designed excavator undercarriage is stable, durable and low maintenance. Available in long-fixed gauge, long-variable gauge, and long-wide variable gauge configurations to suit various applications.



Work Tools

- General Purpose Buckets - Excavator
- Heavy-Duty Rock Buckets - Excavator
- Heavy-Duty Buckets - Excavator
- Tools
- Heavy-Duty Power Buckets - Excavator

Booms, Sticks & Attachments

Three booms and four sticks are available. The reach boom has a larger digging envelope while the mass boom allows larger bucket use with greater digging forces. The special applications boom is reinforced for heavy duty rock application. All booms and sticks are stress relieved.

Buckets

A wide variety of bucket types, aggressive bucket designs, and larger capacity bucket options take advantage of the 345B L's powerful digging forces for improved productivity.

345B L Series II Hydraulic Excavator

Specifications

Engine		
Engine Model	Cat 3176C ATAAC	
Net Flywheel Power	239 kW	321 hp
ISO 9249	239 kW	321 hp
SAE J1349	239 kW	321 hp
Bore	125 mm	4.92 in
Stroke	140 mm	5.51 in
Displacement	10.3 L	628.54 in ³

• no engine derating needed up to 2300 m (7,500 ft)

Weights		
Operating Weight - Long Undercarriage	44 460 kg	98,017 lb

Operating Specifications		
Max Reach at Ground Level	13 m	42.65 ft
Max Digging Depth	9.3 m	30.51 ft

Track		
Standard w/Long Undercarriage	900 mm	36 in
Optional for Long Undercarriage	750 mm	30 in
Optional for Long Undercarriage	750 mm	30 in
Number of Track Rollers Each Side - Standard Undercarriage	9	
Number of Carrier Rollers Each Side	2	

Swing Mechanism		
Swing Speed	8.6 RPM	8.6 RPM
Swing Torque	149 kN·m	110,260 lb ft

Drive		
Maximum Travel Speed	4.4 kph	2.73 mph
Maximum Drawbar Pull - Long Undercarriage	331 kN	74,412 lb

Hydraulic System		
Main System - Maximum Flow (Total)	360 L/min	95.1 gal/min
Maximum Pressure - Equipment - Normal	34 340 kPa	4980 psi
Maximum Pressure - Travel	34 340 kPa	4980 psi
Maximum Pressure - Swing	28 440 kPa	4130 psi
Pilot System - Maximum flow	41 L/min	10.8 gal/min
Boom Cylinder - Bore	160 mm	6.3 in
Boom Cylinder - Stroke	1575 mm	62 in
Stick Cylinder - Bore	190 mm	7.5 in
Stick Cylinder - Stroke	1758 mm	69.2 in

Service Refill Capacities		
Fuel Tank Capacity	720 L	190 gal
Cooling System	45 L	12 gal
Engine Oil	30 L	7.9 gal
Swing Drive (each)	10 L	2.6 gal
Final Drive (each)	15 L	4 gal
Hydraulic System (including tank)	520 L	137 gal
Hydraulic Tank	210 L	55 gal

Sound Performance	
Performance	ANSI/SAE J1166 MAY90 Meets OSHA and MSHA Requirements

Standards	
Brakes	SAE J1026 APR90
Cab/FOGS	SAE J1356 FEB 88 and ISO 10262-1998

345B L Series II Hydraulic Excavator

Materials and specifications subject to change without notice.

Featured machines in photo may include additional equipment.

For more complete information on Cat products, dealer services, and industry solutions, visit us on the web at www.cat.com.

© 2004 Caterpillar
All Rights Reserved.

Product ID: 345B L Series II Fixed Gauge-NACD/LACD

